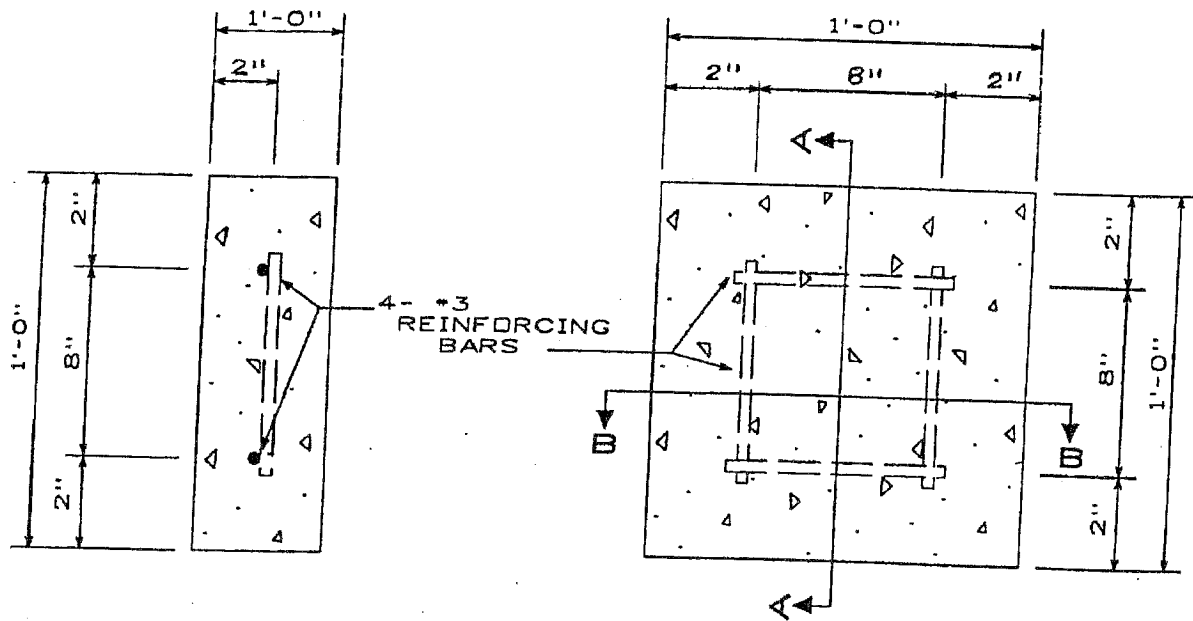
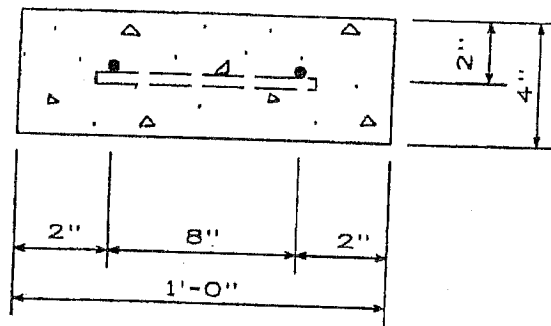


PRECAST CONCRETE THRUST BLOCK



TYPE SECTION- A - A
NOT TO SCALE

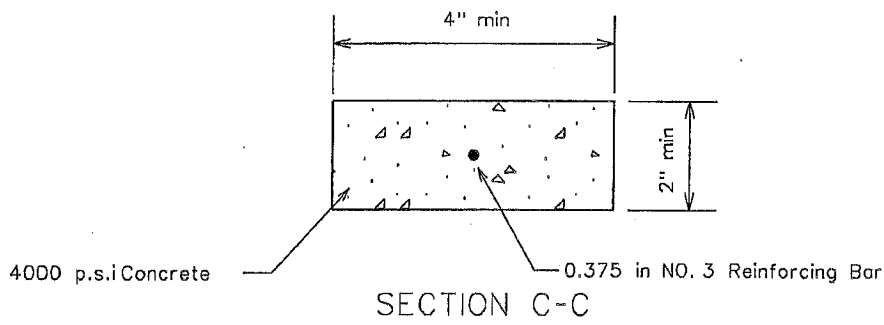
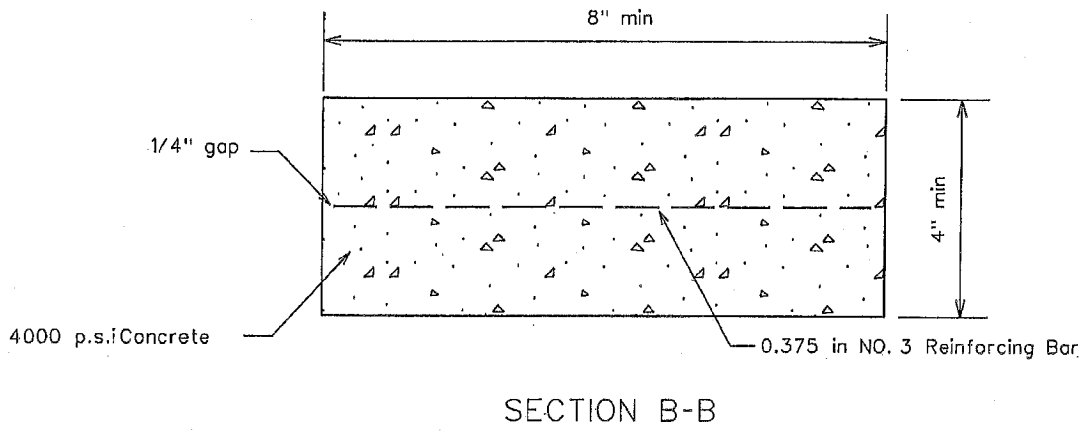
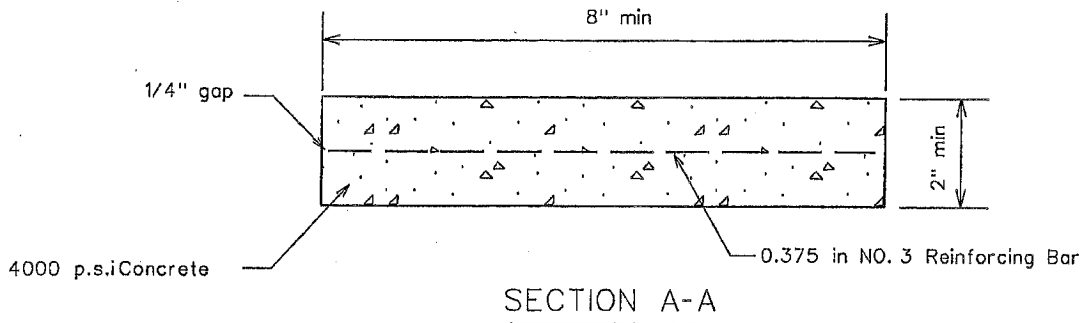
PLAN - PRECAST CONG. THRUST BLOCK
NOT TO SCALE



TYPE SECTION- B - B
NOT TO SCALE

NOTE:

THE CONCRETE SHALL CONFORM TO THE CITY OF SAN ANTONIO SPECIFICATION FOR PUBLIC WORKS ITEM NO. 300 AND SHALL BE CLASS "A" CONCRETE WITH A MINIMUM 28-DAYS COMPRESSIVE STRENGTH OF 3,000 PSI. ALL REINFORCING STEEL SHALL CONFORM TO CDSA ITEM NO. 301. A MINIMUM OF 14-DAY CURE TIME SHALL BE PROVIDED PRIOR TO DELIVERY TO THE SAN ANTONIO WATER SYSTEM.



NOTE:

1. The concrete shall be 4000 psi, min, and reinforced with No. 3 bar, as shown.
2. The concrete bricks are considered anchorage blocks for fire hydrants with various uses.
3. Brick dimensions are A-A = 8"x 2", B-B = 8"x 4", and C-C = 4"x 2".

PROPERTY OF SAN ANTONIO WATER SYSTEM SAN ANTONIO, TEXAS	THRUST BLOCKS FOR FIRE HYDRANTS	APPROVED	REVISED
		APRIL 2013	
		DD-839-01	
			SHEET 3 OF 3